



Background

- **Taitokerau Forest Ltd:**
 - **Registered 22 September 1986**
 - Born from dissatisfaction of earlier leasing arrangement
 - Long Term (mostly 99 years)
 - Unsatisfactory owner preference employment clauses
 - Nominal annual rents

Background

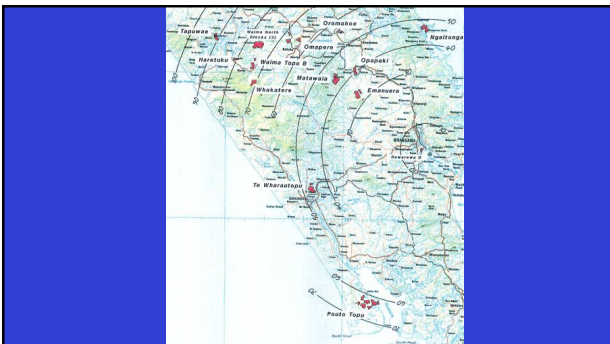
<ul style="list-style-type: none">• Original Directors<ul style="list-style-type: none">• Tom Parore• Dr Pat Hopeha• Des Ogle• Ross Wright• Kevin Prime• Sonny George• Paul White• William Mason	<ul style="list-style-type: none">• Current Directors<ul style="list-style-type: none">• Rawson Wright• Morgan Toia• Rangi Mitchelson• Walton Davis• Marie Tautare• Wiremu Harding• Mike Kake
--	--

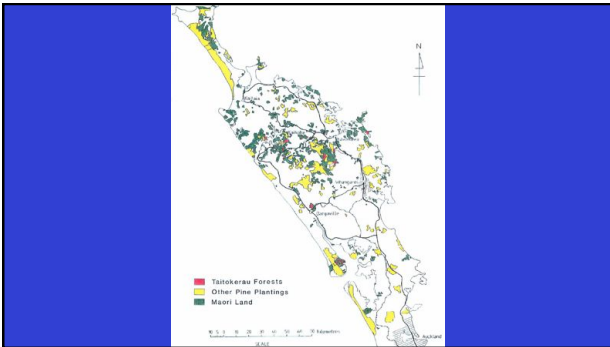
Background

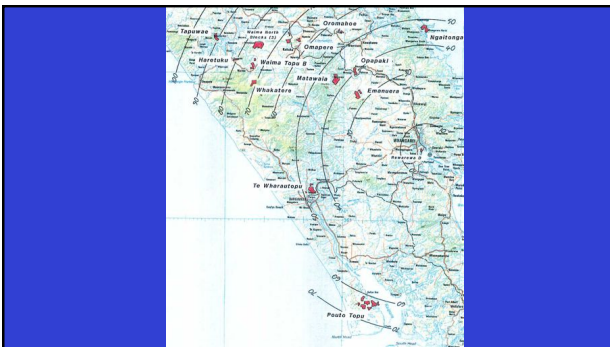
- **Forest Right:**
 - Forestry Right registered
 - Establish, tend, protect & harvest
 - To grow and market one rotation
 - Forest crop used to secure finance
 - Land remained Unencumbered
 - Create of employment
 - Contracts offered to owners to
 - Perform on time
 - High standard
 - Price in line with industry norms
 - Protected areas
 - Wahitapu, urupa, etc

Background

- **1986 Sept - Nov**
 - 2622 Ha (681 ha planted)
- Next two years
 - 5923 ha
- Currently ≈ 4000 Ha
 - Some area was bought back by blocks
 - Harvesting completed & land handed back





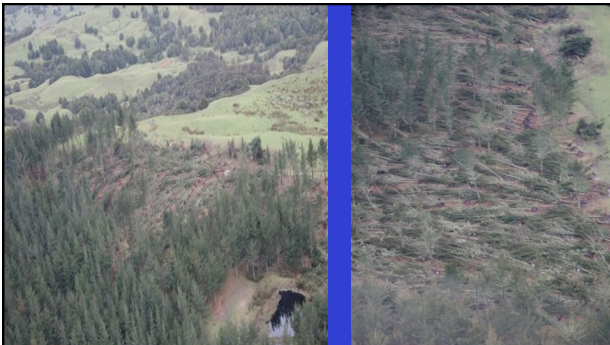




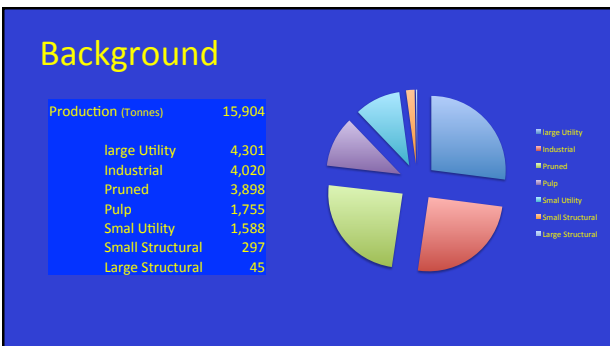


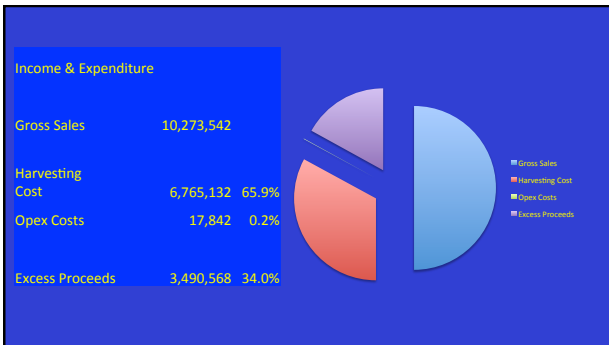












Background

- **TFL Model**
 - Pro
 - 19 Maori blocks came together under one kaupapa
 - 5 hapu involved
 - Employment for owners
 - Directors are elected by owners
 - Cons
 - Financing arrangements – high interest rates
 - One rotation
 - Employment for owners

Background

- **TFL Model**
 - Challenges opportunities
 - Movement up the value chain
 - How to capture part of \$200 M gross harvest receipts
 - Develop the model (collective) for other businesses



Taitokerau Forests Ltd

Possibilities



Taitokerau Forestry Research

Create a New Forest Industry
in Northland

Current



Background

- **Coming together of minds:**
 - Wanting natives rather than radiata
 - Wanting more of the Value Chain
 - Growing, harvesting, milling, crafting high-value products, marketing, exporting
 - Alternative use of existing resource
 - Added value products
 - Biofuels
 - Power generation
 - Rongoa
 - Honey
 - Complimentary crops
 - Exporting Potential
 - China
 - Indonesia
 - Europe

Background

- **Coming together of minds started November 2011:**
 - Manuka Henare,
 - Pita Tipene,
 - Rawson Wright,
- **And then**
 - Robert Willoughby,
 - Peter Bennett,
 - Charlie Spiller
 - Mike Corrigan
 - Tui Shortland,
 - Hemi Toia,
 - Morgan Toia,
 - Elvis Reta,
 - Valleta Tawhai
 - Greg Steward
 - Chris Goulding
 - Russell Burton
 - Amber Nicholson

Background

- **First Bid:**
 - MSI (Ministry of Science & Innovation)
 - March 2012 ,
 - Unsuccessful
- **Second Bid:**
 - SFF (Sustainable Farming Fund)
 - August 2012
 - Successful
 - Participants:
 - Taitokerau Maori Landblocks – Rawson Wright
 - SCION – Peter Bennett, Lania Holt, Greg Steward
 - Auckland University – Manuka Henare, Rick Starr

Project

- **Investigate a new Forestry system:**
 - Indigenous & Exotic
 - High-value products
 - Support local industry eg: recreation, tourism
 - Results to attract investors
- **Forestry scenarios:**
 - 2 to 4
 - Against Taitokerau land
- **Models based:**
 - On Economic analysis (maybe a Maori model)
 - To build an Investment case

Outcomes

- **Reports contain:**
 - GIS maps,
 - Trees species available (Stocktake)
 - Options
 - Silvicultural management scenarios
 - Future planting optimisation
 - Economic Analysis
 - Time periods – 10, 30, 90, 150 years
- **Prepared Reports:**
 - Block specific – non-public
 - Important to protect the IP of blocks
 - Collective – public
 - Models developed are transferable

Blocks on board:

- Te Rarawa
- Waima
- Rawhiti
- Ngati Hine
- Nga Maunga Whahahii
- Pouto Topu
- Pouto 2F

Species pre-selected so far:

- Kauri
- Totara
- Rimu
- Manuka – Honey, Oil, Nursery
- Kanuka – Honey, Oil, Nursery
- Rongoa – Kumarahau, Kawkawa,

Possibilities





